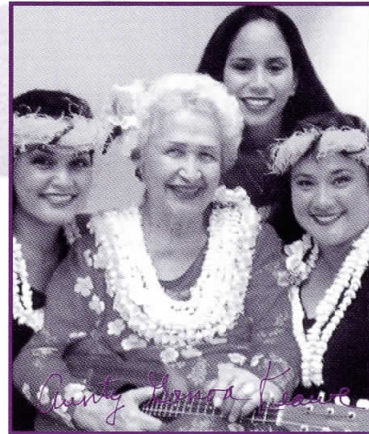


# Living Treasures

OF HAWAI'I



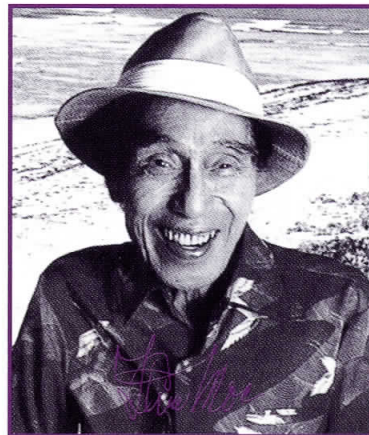
REVEREND MITSUO AOKI



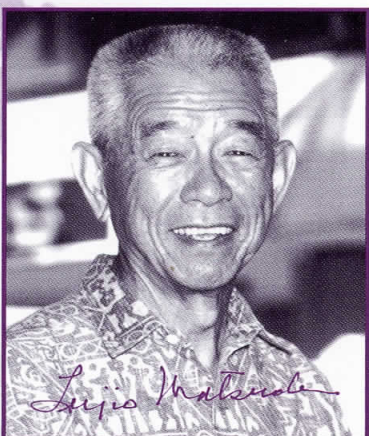
GENOA KEAWE



PATIENCE NĀMAKA BACON



TAU MOE



DR. FUJIO MATSUDA



EDITH KAWELOHEA MCKINZIE

2004



# The 29th Annual Living Treasures of Hawai'i

## The LIVING TREASURES

### OF HAWAI'I

*is a program instituted  
by the Honpa Hongwanji  
Mission of Hawai'i  
to recognize and honor  
individuals for their  
sustained contributions  
toward building a more  
humane society  
in our island state.*

---

#### HONPA HONGWANJI MISSION OF HAWAI'I LIVING TREASURES COMMITTEE

Cecilia Lindo, *Chairperson*

Bernice G. Bowers

Kenneth Brown

Reverend Yoshiaki Fujitani

Reverend Eric Matsumoto

Dr. Ko Miyataki

Dr. Margaret Oda

Stanley Yamamoto

*Ex officio*

Bishop Chikai Yosemori

Frederick S. Nonaka, *President*  
*Honpa Hongwanji Mission of Hawai'i*

---

#### ACKNOWLEDGEMENT

Herbert Hamada, *Volunteer*

## PROGRAM

February 13, 2004

Sheraton Waikiki

Honolulu, Hawai'i



*Sponsored by*

Honpa Hongwanji Mission of Hawai'i



#### WELCOMING REMARKS

Dr. Ko Miyataki

*Mistress of Ceremonies*

#### BRIEF HISTORY

Dr. Margaret Oda

#### VIDEO PRESENTATION

#### INTRODUCTION OF HONOREES

Dr. Ko Miyataki

Reverend Mitsuo Aoki

Patience Nāmaka Bacon

Genoa Keawe

Dr. Fujio Matsuda

Edith Kawelohea McKinzie

Tau Moe

#### NOTES OF APPRECIATION

Cecilia Lindo

*Chairperson, Living Treasures Committee*

Nalani Olds

*Queen's Prayer*

#### CLOSING REMARKS

Dr. Ko Miyataki



HONPA HONGWANJI MISSION OF HAWAII

OFFICE OF THE BISHOP • 1727 PALI HIGHWAY • HONOLULU, HAWAII 96813 • PH: 522-9200 • FAX: 522-9209



**Living Treasures Program**

**Honolulu, Hawai'i**

**February 13, 2004**

Aloha and welcome to the 92nd Legislative Assembly Aloha Banquet of the Honpa Hongwanji Mission of Hawai'i and the 29th Living Treasures of Hawai'i Program.

I am truly grateful and very happy that, again, this year we are able to share this evening with six wonderful treasures of Hawai'i honorees and with the Dharma Ohana.

These individuals have demonstrated excellence and met very high standards of achievement in their particular field of endeavor and thus, have made a significant difference toward the betterment of our community. **Reverend Mitsuo Aoki, Ms. Patience Nāmaka Bacon, Ms. Genoa Keawe, Dr. Fujio Matsuda, Ms. Edith Kawelohea McKinzie, and Mr. Tau Moe.** Congratulations to each honoree. We thank you from the bottom of our hearts for helping to create a more humane environment where we can live embraced in true human kindness.

Honpa Hongwanji Mission of Hawai'i was established in 1889, and we have 115 years of history in this wonderful land called Hawai'i. According to the teaching of Saint Shinran, we do not only focus upon the welfare of our members but also strive to provide services to our community for the welfare of those who live in our community. One of our unique programs is the Living Treasures of Hawai'i. Here in Hawai'i, we have many wonderful cultures which we can be proud of in the world. Through this program, we encourage people in Hawai'i to continue to preserve its wonderful cultures, to cultivate a sense of gratitude and to live daily, this spirit of Aloha.

In closing, on behalf of the Honpa Hongwanji Mission of Hawai'i, I welcome you to this banquet. I would like to express my deepest gratitude for your continued support for this program. Please enjoy the evening. Thank you very much.

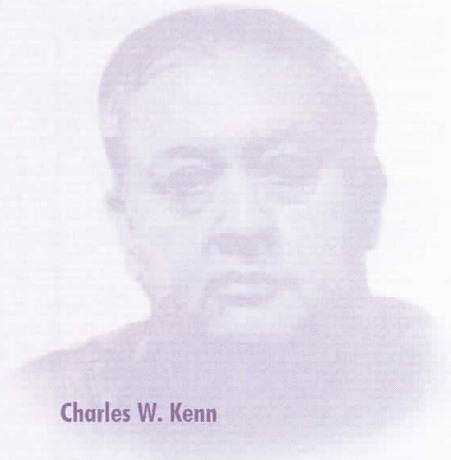
Gassho,

Chikai Yosemite, Bishop

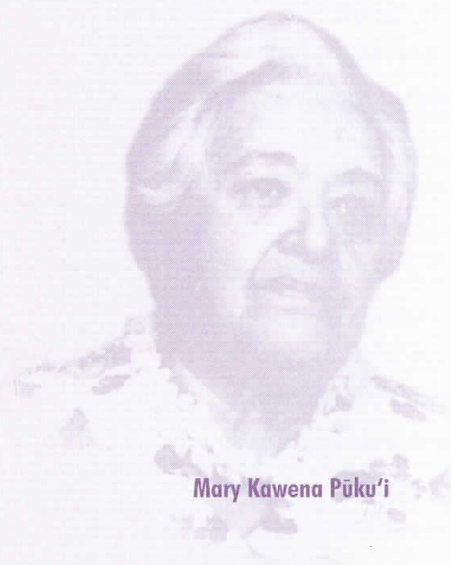
Honpa Hongwanji Mission of Hawai'i



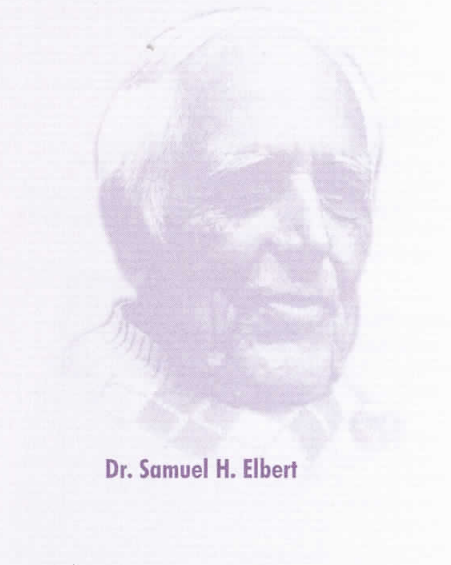
# A History of the Living Treasures of Hawai'i



Charles W. Kenn



Mary Kawena Pūku'i



Dr. Samuel H. Elbert

LIVING TREASURES OF HAWAII has been a part of our cultural landscape since 1976. Drawing inspiration from the Living National Treasures (Ningen Kokuho) of Japan, insurance executive Paul Yamanaka knew there were many people in Hawai'i who deserved similar recognition for their contributions to the preservation and perpetuation of the islands' distinctive cultural and artistic heritage.

Mr. Yamanaka brought his idea to Yoshiaki Fujitani, Bishop of Honpa Hongwanji Mission. Wholeheartedly embracing the idea, Bishop Fujitani worked quickly to establish the program. A committee of experts in Hawaiiana and practicing artists actively involved in the Hawaiian community was formed. It was comprised of John Dominis Holt, publisher; Abraham Pi'ianā'i'a, University of Hawai'i professor; Zenetta Ho'ulu Cambra, chanter; Rubellite Johnson, translator of *Kumulipo*; Homer Hayes, historian; and Cecilia Lindo, Hongwanji Mission School teacher. Mr. Yamanaka served as chairman and Bishop Fujitani was an ex officio member.

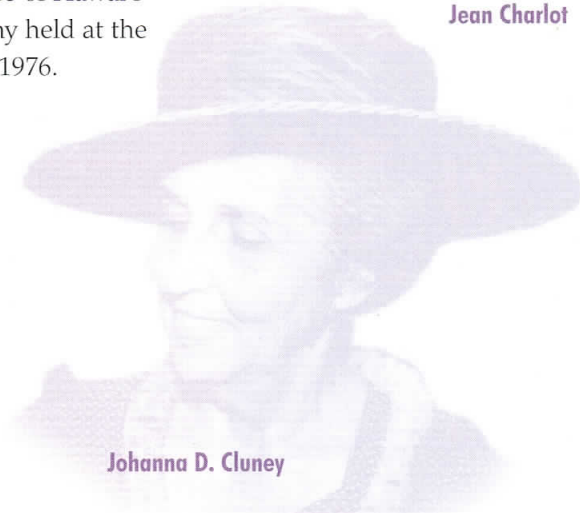
Charles W. Kenn, noted scholar, historian, author, and practicing kahuna was the first person to be named a Living Treasure of Hawai'i in an informal ceremony held at the Hongwanji Mission in 1976.

The following year, eight other individuals were honored. These Living Treasures included 'Iolani Luahine, dancer; Lokalia Montgomery, chanter; Johanna D. Cluney, feather artisan; Mary Kawena Pūku'i, author of the *Hawaiian Dictionary*; Dr. Samuel H. Elbert, anthropologist; Wright Bowman, woodcrafter; and Jean Charlot, artist.

Since the program's inception over a hundred of Hawai'i's people, including educators, dancers, artists, clergymen, businessmen, and community volunteers, among others, have been named Living Treasures of Hawai'i. Representing Hawai'i's rich cultural heritage, these honorees are devoted to preserving the spirit, traditions, and values of our island home for future generations.



Jean Charlot



Johanna D. Cluney



## Reverend Mitsuo Aoki



Enlightened. Compassionate. A cosmic dancer. These are just a few terms that have been used to describe the Reverend Mitsuo "Mits" Aoki. Religion has played a major role throughout his long life, first as a Buddhist and then as a Christian. He began the University of Hawai'i's Department of Religion, where he spent decades teaching one of the most popular courses on campus. He explored the meaning of death and dying with students, often dancing and jumping onto tables to make a point.

Perhaps best known for his work in the field of death and dying, Rev. Aoki has worked tirelessly to help bring understanding, acceptance, and ultimately peace to terminally ill patients and their families. By sharing his wisdom, compassion, and generous spirit, Rev. Aoki teaches those who find themselves in the midst of great personal sorrow how to focus on the positive, value their resources, and view death as a truly liberating life experience.

*Birthplace: Hawi, Hawai'i*

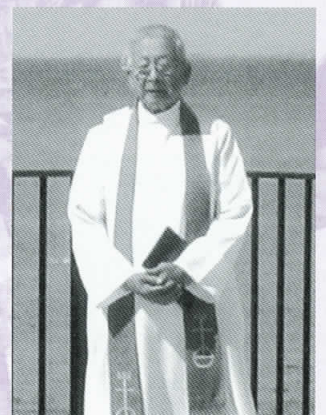
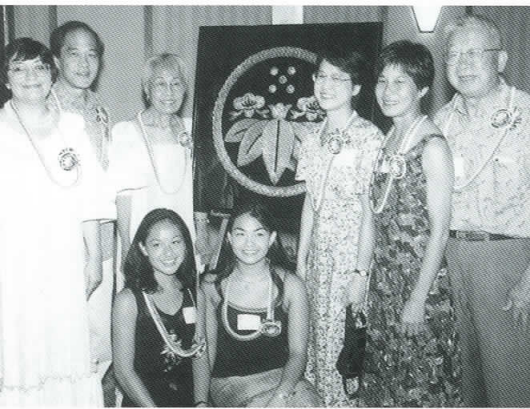
### Lifetime Achievements

- First Nisei obtain an honorary Doctor of Divinity Degree from Pacific School of Religion, oldest graduate theological school in the West
- Started University of Hawai'i's Department of Religion
- Established the Foundation for Holistic Health, non-profit organization that cultivates and promotes a holistic approach to health, healing, death, and dying

- Co-founded Hospice Hawaii
- Established "Make Today Count," an organization for terminally ill patients
- Created a Japanese Zen Garden as a memorial to his late wife, Lynne Aoki
- Created Hui Noelo, a group seeking to know and be willing to "move the mind"
- Primary consultant and subject of 1-hour documentary, "Living Your Dying"

### Honors

Thomas Jefferson Award finalist, a national award honoring outstanding Americans for "the highest achievements in the field of public service in the United States."



*Enlightened. Compassionate. A cosmic dancer.*



# Patience Elmay Nāmakauahoaokawena'ulao-kalaniikiikikalaninui Wiggin Bacon



Patience Elmay Nāmakauahoaokawena'ulao-kalaniikiikikalaninui Wiggin Bacon, better known as Pat Nāmaka Bacon, or simply "Aunty Pat," has spent a lifetime learning, appreciating, and sharing her encyclopedic knowledge of the Hawaiian language, culture, chants, and hula.

Orphaned at birth, Aunty Pat was adopted by Henry and Pa'ahana Wiggin. She was raised in the Hawaiian tradition of "hanai" by the Wiggin's daughter, Mary Kawena Pūku'i, and her husband, Napoleon Kalōli'i Pūku'i. Aunty Pat says her Hawaiian name "speaks of Kawena's haughty eyes and intense heat and acknowledges the Ka'ū family ties to the fire goddess Pele."

Kawena Pūku'i, the highly respected authority on Hawaiian language and culture, infused her knowledge of all things Hawaiian into young Pat, who grew up to become a noted cultural resource specialist at the Bishop Museum.

Aunty Pat continues to share her wealth of knowledge about the Hawaiian culture. In passing along her love of hula kahiko, or ancient hula, she says the emphasis should be on the poetry of the language, not the dance itself, and that "you have to understand the language if you are going to appreciate the poetry."

*Birthplace: Waimea, Kaua'i*



## Lifetime Achievements

- Committee member, University of Hawai'i Committee for the Preservation of Hawaiian Language, Culture and the Arts
- Board member, Hawai'i Historical Places Review Board, State Department of Land and Natural Resources
- Translator, Hawaiian newspaper project
- Editor, "Mele Welo"
- Editor, "Ke Ao Melemele"
- Lecturer, University of Hawai'i at Hilo and Kamehameha Schools, Hawaiian Studies programs
- Hula instructor in Hawai'i, San Francisco, Mexico City, Okinawa, and Japan
- Hula judge at the Merrie Monarch Festival; Queen Lili'uokalani Keiki Hula Competition; King Kamehameha Hula Competition; Hawai'i Secondary Schools Hula Kahiko Competition; and hula competitions in Mexico and Japan

## Honors

2002 Recipient, The Mary Kawena Pūku'i Award, Rotary Club of West Honolulu. . .2000 Aloha Week Parade Grand Marshall. . .1999 Honoree, Prince Lot Hula Festival. . .1989 Recipient, Pulama Award, Kalihi-Pālana Culture & Arts Society



*The poetry of dance is the language.*



# Genoa Keawe



Mention Hawai'i's *First Lady of Hawaiian Song* and one name comes to mind—Aunty Genoa Keawe. A songbird for most of her long life, Aunty Genoa has been sharing her musical talents with generations of fans in Hawai'i and around the world.

Aunty Genoa's talent for singing was discovered when she joined the church choir at a young age. In the 1940s Aunty Genoa began singing with the Honolulu Rapid Transit musicians. She credits John K. Almeida for giving her start in radio.

Known for her Hawaiian falsetto, her ability to hold high notes for over two minutes, and lively renditions of songs in the chalangalang style, Aunty Genoa is typically modest about her talent. Aunty Genoa continues to bring joy to her adoring public on Thursday evenings at the Waikiki Beach Marriott Resort, formerly known as the Hawaiian Regent Hotel. She says her musical ability is a "gift from God," which she is fortunate enough to still possess, much to the delight of Hawaiian music aficionados.

*Birthplace: Kaka'ako, O'ahu*

*Trademark song: "Alike"*

## Lifetime Achievements

- Singer with the Honolulu Rapid Transit musicians
- 1946 - Recorded the first of over 140 songs on the "49th State" label
- Groups: Genoa Keawe and her Hula Maids; Genoa Keawe and her Polynesians

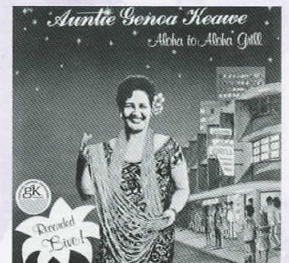
- Genoa Keawe Records, started in 1966 with son, Gary Aiko, and vocalist Joe Keawe, her husband's relative
- Kumu hula

## Honors

2001 Hawaiian Music Hall of Fame Honoree. . .2000 National Heritage Fellowship (This is the nation's highest honor in folk and traditional arts and is presented by the National Endowment for the Arts). . ."Living Treasures of Island Music," 2000 Ho'okahiko Award; Duke's Canoe Club, Waikiki. . .Recipient of multiple Na Hoku Hanohano awards, Hawai'i's "Grammy". . .1998 Prince Lot Hula Festival, dedicated to Genoa Keawe. . .1987 King Kamehameha Hula Competition, dedicated to Genoa Keawe



*First lady of Hawaiian song.*





# Dr. Fujio Matsuda



Rumor has it Fujio Matsuda, Ph.D., is retired, although you'd never know it from his hectic schedule.

In January 2003, Dr. Matsuda spearheaded the drive to raise \$9 million for the Japanese Cultural Center of Hawaii, which was about to be sold. The goal was reached in just three months. Tending to community and government affairs has been a running theme throughout his life.

In the early days of his exemplary career, Dr. Matsuda served as Director for the State Department of Transportation under the late Governor John A. Burns. After 10 years at DOT's helm, he moved on to the University of Hawai'i, becoming the University's first Asian American President. His 10-year tenure as UH President included several significant achievements. Among them establishing the statewide community college system; separating the East-West Center from the UH; and developing the first system-wide strategic plan for the University. Following his retirement in 1984 as University President, Dr. Matsuda became Executive Director at the Research Corporation of the University of Hawai'i, where he served for ten another years.

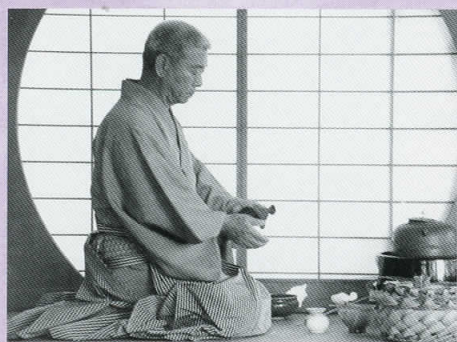
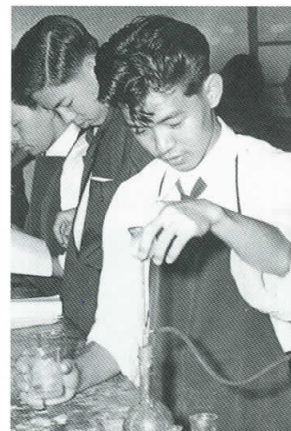
Dr. Matsuda is currently Chairman of the Board of the Pacific International Center for High-Tech Research (PICHTR), a non-profit organization, where he is involved in developing prototype photovoltaic and hybrid systems in Fiji. This is being achieved through a collaborative effort with the Ministry of Foreign Affairs of Japan, which is providing the funding. PICHTR underscores yet another

major theme in Dr. Matsuda's life—science—which he sees as a way to enlighten the human race.

*Birthplace: Honolulu, Hawai'i*

## Lifetime Achievements

- Current Chairman of the Board, Pacific International Center for High-Tech Research (PICHTR), a non-profit organization currently engaged in collaborative projects with Fiji and Japan
- Chairman, Save the Center Committee, Japanese Cultural Center of Hawaii. Committee raised \$9 million within a very short period of time. (January to June 2003)
- President, Japan America Institute of Management Science (JAIMS) (1994-1996)
- Executive Director, Research Corporation of the University of Hawai'i (1984-1994)
- President, University of Hawai'i (1974-1984)
- Director, State Department of Transportation (1963-1973)



*A creative & visionary leader.*

## Honors

McKinley High School Foundation Honor Alumnus. . .Public Schools of Hawaii Foundation Honor Alumnus. . . UH Alumni Distinguished Alumnus. . . Rose Polytechnic Institute Honor Alumnus. . .Rose Hulman Institute Honorary Doctor of Engineering. . . Hawaii Engineer of the Year. . . American Society of Civil Engineers Parcel Sverdrup Award. . .Order of Sacred Treasure, Second Class, Government of Japan. . .Urasenke Tankokai Chado Culture Award



## Edith Kawelohea McKinzie



Edith Kawelohea McKinzie is a leading expert on Hawaiiana. She chairs the University of Hawai'i's Committee for the Preservation and Study of the Hawaiian Language, Art, and Culture. A renowned genealogist and author, Auntie Edith is also the Director for the Bishop Museum's Hawaiian Language Newspaper Indexing and Cataloging Project. Although her research centers on native Hawaiian issues, she is not blind to other groups. And while she recognizes the contributions made by others, Auntie Edith wants to be sure that traditional Hawaiian values and achievements are kept alive so they may be shared and passed on to the coming generations.

*Birthplace: Honolulu, Hawai'i*

### Lifetime Achievements

- Author, *Hawaiian Genealogies*, Vols. I and II; Vol. III is in progress
- Participant, Pacific Arts Festival
- Participant, Smithsonian Institution's American Folklife Festival in Washington, D.C.
- Participant, Jacob's Pillow, oldest dance festival in the United States
- Participant, Mele Ai Moku, Hawaiian Historical Society's event at the 'Iolani Palace
- Judge at various local, national, and international hula competitions including Merrie Monarch, King Kamehameha Hula Competition,

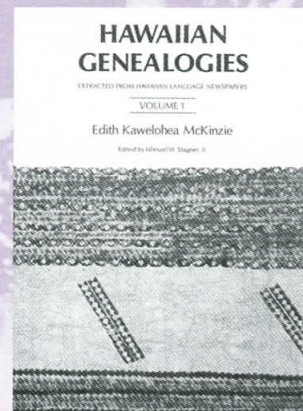
Queen Lili'uokalani Keiki Hula Competition, Hawaii Secondary Schools Hula Competition. Competitions in California, Mexico, and Japan

### Honors

Pulama Award, Kalihi-Pālana Culture and Arts Society. . . Order of Distinction, State Council on Hawaiian Heritage. . . Kukui Mālamalama, Office of Hawaiian Affairs. . . 1999 Prince Lot Hula Festival Awardee. . . David Malo Award, Rotary Club of West Honolulu . . . He Makana Hi'ipoli Makamae, Prince Kūhiō Hawaiian Civic Club of Honolulu

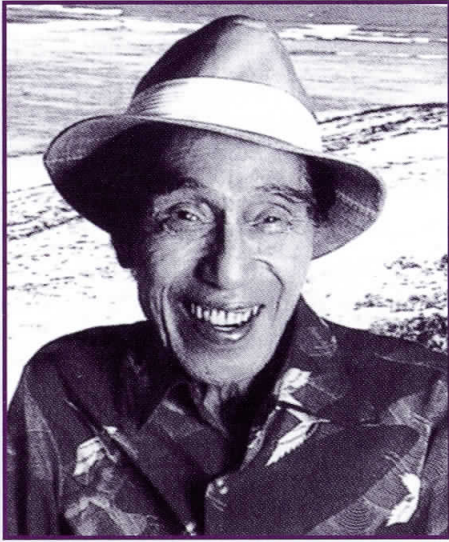


*Noted Hawaiian genealogist & educator.*





# Tau Moe



Tau Moe—recording artist, film and television performer, entertainer extraordinaire. At age 95, Tau Moe is the world's oldest living steel guitar player. He continues to play, compose, re-arrange songs, and teach master classes in steel guitar. As a teacher, he follows in the footsteps of his mentor, Joseph Kekuku, the man who invented the steel guitar.

Tau Moe began his long and colorful career in 1924. The 16-year-old McKinley High School student was selected to replace his teacher, Hawaiian steel-guitar legend, Sol Ho'opi'i, on a 27-day tour of the Orient. That was just the beginning for this talented musician. Tau Moe and his family have performed before both the famous and infamous—Aristotle Onassis, Adolf Hitler, King Farouk of Egypt, Prince Rainier and Princess Grace of Monaco, and many more. The Moe family succeeded in breaking the "color barrier," performing in Howard Hughes' Las Vegas development in the 1940s.

A little known fact of Tau Moe's history is the great courage and humanitarianism Moe showed during World War II, when he helped smuggle many Jewish musician friends out of Nazi Germany before the beginning of the Holocaust. After the war, Tau Moe and his family continued their humanitarian efforts, performing for

free at fund-raising efforts aimed at rebuilding Germany, Holland, and Belgium.

Music, particularly good music, can soothe the spirit and create harmony throughout the world. And that's why Tau Moe is so passionate about music.

*Birthplace: German Samoa*

## Lifetime Achievements

- Recorded first album in 1929
- Oldest living recording artist for both SONY and DECCA records
- One of the oldest active members of the Association of Composers, Artists, and Publishers (ASCAP)
- Speaks 10 languages including German, Samoan, and English
- Lifetime member of American Federal of Musicians
- Lifetime member of Hawai'i Federation of Musicians

## Honors

2003 recognized for his lifetime contribution to Hawaiian music by the Hawaii State Senate, Hawaii State House of Representatives, Hawaiian Steel Guitar Association, Governor Linda Lingle, and Mayor Jeremy Harris



*Entertainer extraordinaire.*





# *Living Treasures of Hawai'i (1976 - 2003)*

## **1976**

Charles Kenn

## **1977**

Wright Elemakule Bowman, Sr.  
Jean Charlot  
Johanna Drew Cluney  
Samuel Hoyt Elbert  
Kenneth Pike Emory  
'Tolani Luahine  
Rosalie Lokalia Lovell  
Montgomery  
Mary Kawena Pūku'i

## **1978**

Theodore Kelsey

## **1979**

Abraham Kahikina Akaka  
Emma Kalani-kau'i-ka'alaneo-  
kilioulaninui-amamao-  
ho'opi'i-wahine-  
keakaleihilinaka deFries  
John Dominis Holt, IV  
Edward Leilani Kamae  
Edith Kekuhikuhi-i-pu'uone'o-  
nā'ali'i-o-kohala Kenao  
Kanaka'ole  
Clorinda Low Lucas  
Aldyth Vernon Morris  
Alice Ku'ulei-aloha-poina'ole  
Namakelua  
Philip Kunia "Gabby" Pahinui

## **1980**

Gabriel I  
Maxine Hong Kingston  
Donald Kilolani Mitchell  
Pilahi Paki  
Alfred Preis

## **1981**

Solomon Kekipi Bright, Sr.  
Oswald Bushnell  
Leo Chai  
Leon J. Edel  
William H. Meinecke  
Isamu Noguchi  
Juliet Rice Wichman

## **1982**

Juliette May Fraser  
Annie Lehua Asam Kanahele  
Richard Lyman, Jr.  
Silver Kiniohi Piliwali  
James Ka'upena Wong, Jr.

## **1983**

Homer Ahu'ula Hayes  
Rubellite Kawena Kinney  
Johnson  
Zaneta Ho'oululahui Cambra  
Richards  
Mornah Nalamaku Simeona  
Emily Kau'i Zuttermeister

## **1984**

Satoru Abe  
Bumpei Akaji  
Irmgard Farden Aluli  
Francis Haar  
Herb Kawainui Kāne  
Tadashi Sato  
Emma Kapi'olani Farden Sharpe

## **1985**

Gladys Kamakakuokalani  
Ainoa Brandt  
May Moir  
Sarah M. Wood Nalua'i  
Katashi Nose  
Soichi Sakamoto  
Allan Frederic Saunders

## **1986**

Claude F. Du Teil  
Kahu Edward L. Kealanahale  
Milton M. Howell  
Margaret Machado

## **1987**

Agnes C. Conrad  
Agnes Kalaniho'okaha Cope  
Edmund M. K. Enomoto  
Joe Harper  
Claude Horan  
David Kuraoka  
John Keolamaka'ainānakalāhui-  
okalani Lake  
Kahauanu Lake  
Toshiko Takaazu

## **1988**

Kenneth F. Brown  
David Kauwelo Kaupu  
Murray Turnbull

## **1989**

Reiko Mochinaga Brandon  
Healani Onohiaulani Chilton  
Doane  
Yehan Numata  
Reuben Tam  
Tseng Yuho (Betty Tseng Ecke)

## **1990**

Richard Kekuni Blaisdell  
Edmond Lee Browning  
Frances Damon Holt  
Kyo Kawabata  
  
**1991**  
Daniel G. Chun  
Dwight Pauahi Kauahikaua  
Moses Kapalekilahao Keale, Sr.  
Puanani Kanemura Van Dorpe

## **1992**

Helen Hoakalei Kamau'u  
David Kaohelauii  
Marie Emilia Leilehua  
McDonald  
Harry Seisho Nakasone  
Matsuno Yasui  
David Nu'uhiwa Enoka  
Kaohelaui'i  
  
**1993**  
Elaine Arita  
Yoshiko Matsuda  
Stewart Valentine Medeiros, Sr.  
Edith Hanae Tanaka  
Shige Yamada

## **1994**

Todd Toshiaki Akita  
Daniel J. Dever  
Yoshiaki Fujitani  
Roy T. Fukumura  
Deborah Kepola Kekalia  
Yukio Ozaki  
Marion Grace Saunders

## **1995**

Donald Tai Loy Ho  
Sally Fletcher Murchison  
Leone Kamana Okamura

## **1996**

Wallace F. Froiseth  
Hiroki Morinoue  
Shinichi Suzuki

## **1997**

Robert Aitken  
Henry A. Auwae  
Martha Kaumakaokalani Aoe  
Poepoe Hohu  
Ralph Chikato Honda  
Iwao Mizuta

## **1998**

Hubert Victor Everly  
George Sanford Kanahele  
Beatrice Kapua'okalani Hilmer  
Krauss  
Jerry Okimoto  
Vladimir Ossipoff  
Ruth Tabrah

## **1999**

Earl E. Bakken  
Samuel S. A. Cooke  
Shimeji Ryusaki Kanazawa  
Yutaka Kimura  
Abraham St. Chad Pi'ianā'i'a  
Adam A. "Bud" Smyser

## **2000**

Glenna Fusae Kimura Ewing  
James K. Fujikawa  
Ah Quon McElrath  
Rose Nakamura  
Charles Nainoa Thompson

## **2001**

Ronald E. Bright  
Sean Kekamakupa'a Lee Loy  
Browne  
Rocky Ka'iouliokahihikolo'Ehu  
Jensen  
Bob Krauss  
Jesse "Takamiyama" Kuhaulua  
Azumazeki Oyakata  
Clarence K. M. Lee

## **2002**

Dr. Alfred Bloom  
Takeshi Fujita  
Lynne Yoshiko Nakasone  
Takashi Nonaka  
Dr. Yosihiko Sinoto  
Myron Bennett (Pinky)  
Thompson

## **2003**

Beatrice "Beebe" Freitas  
Mary Lou Kekuewa  
Dr. Albert H. Miyasato  
Dr. Margaret Y. Oda  
Ted T. Tsukiyama  
Masaru "Pundy" Yokouchi



*THE HONPA HONGWANJI MISSION  
OF HAWAI'I  
GRATEFULLY ACKNOWLEDGES  
THE FOLLOWING SPONSORS  
FOR THIS EVENT:*

PLATINUM SPONSORS

KTA Super Stores  
Nakila & Marti Steele

GOLD SPONSOR

Central Pacific Bank

SILVER SPONSOR

City Bank

BRONZE SPONSORS

Bank of Hawaii  
First Hawaiian Bank  
Hawaii Government Employees  
Association  
Hawaiian Host Chocolates  
Island Insurance Company, Ltd.  
Colbert & Gail Matsumoto



HONPA HONGWANJI MISSION OF HAWAI'I  
1727 Pali Highway  
Honolulu, Hawai'i 96813  
Phone: 522-9200 • Fax: 522-9209